

2023-2024 Annual Report

Early Learning and Child Care

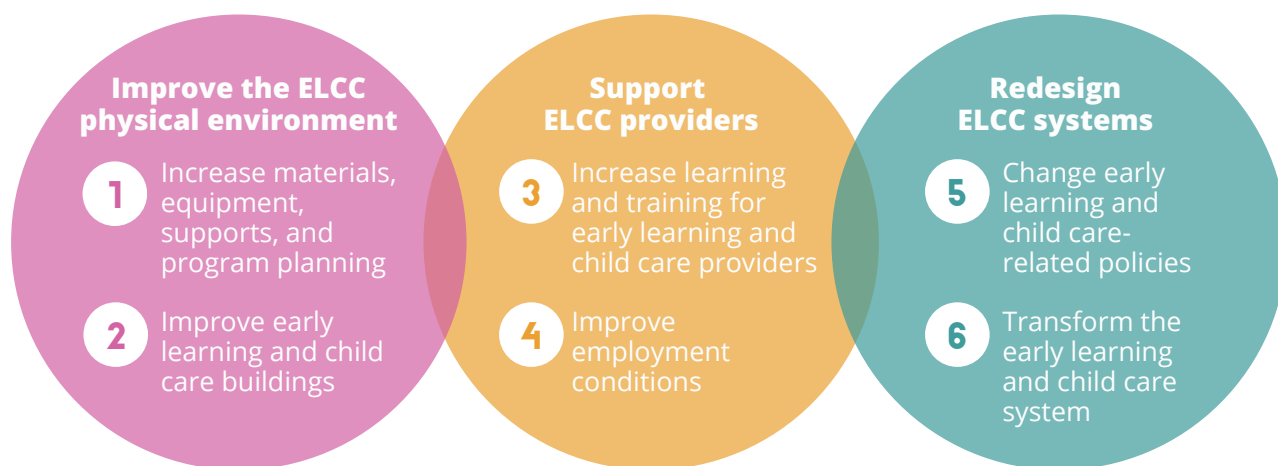
Strategic Action Plan for Inclusion and Equity

Government of Nunavut, Department of Education, Early Learning and Child Care

Summary

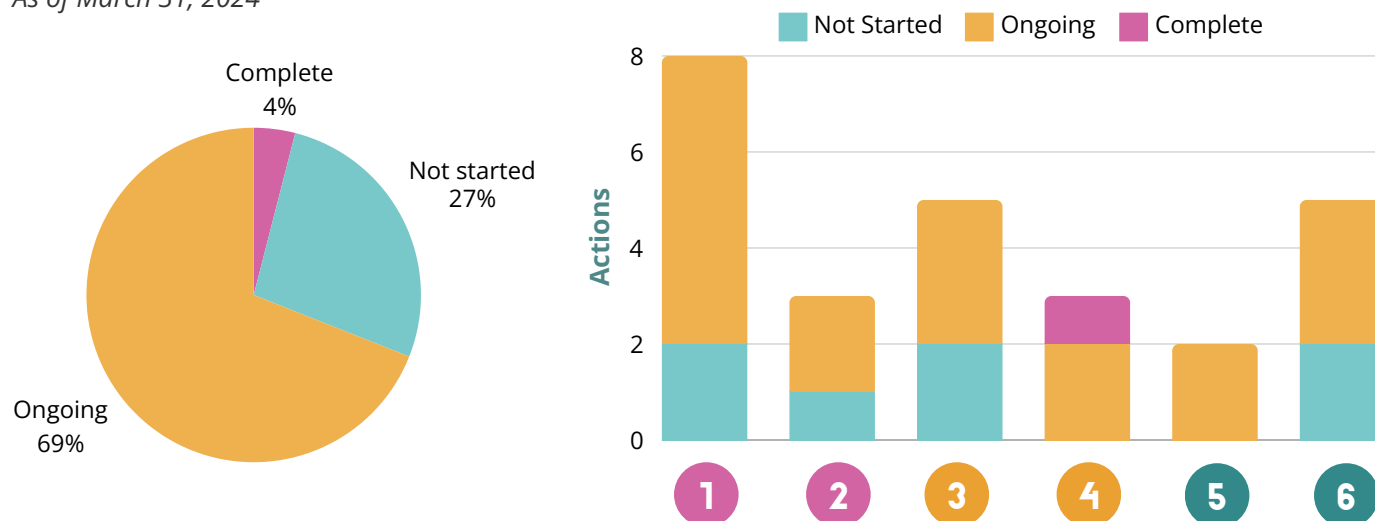
The Early Learning and Child Care Strategic Action Plan for Inclusion and Equity is part of the Canada-Nunavut Canada-Wide Early Learning and Child Care Agreement and connects to actions in the Government of Nunavut's Katujjiluta Mandate that support inclusive early learning and transformation of the child care sector.

Areas of Focus



2023-2024 Overall Action Progress

As of March 31, 2024



2023-2024 Activity Highlights



Wage scale

Adopted a new wage scale to support a stable workforce.



Certification

Signed contribution agreement with NAC to expand ECE certificate course delivery.



Infrastructure

Created a list of centres operating out of GN assets and preliminary planning to assess their maintenance needs.



Funding

Developed a Grants and Contributions Policy schedule and funding pot for centres to apply and receive funding for accessibility upgrades.



Public Awareness

Developed a public awareness campaign on the importance of early childhood education.



Reporting and Transparency

Provided implementation updates to Inuit organizations.



Legislation

Ensured that inclusion and equity considerations are part of the review of the Child Day Care Act.



Working in Partnership

Established ongoing partnership with Nunavummi Disabilities Makinnasuaqtiit Society for a sensory toy pilot project and with Nunavut Black History Society for the creation of inclusive learning materials. Worked with Family Services to create 12 new foster-focused spaces.



Curriculum

Signed a contract to undertake preliminary research to support ELCC curriculum development.

2023-2024 Partners and Stakeholders

Nunavut Inuit Organizations
Inunnguiniirmut Tukimuattittijit working group
Nunavut Disabilities Makinnasuaqtiit Society
Nunavut Black History Society
Department of Family Services
Department of Health
Nunavut Arctic College
Licensed child care centres

Canada

