

2020 - 2023



ᓄᓇᓂᓪ
ᓴᓴᓂᓪ ᓴᓴᓂᓪ
ᓴᓴᓂᓪ

ᓴᓴᓂᓪ ᓴᓴᓂᓪ ᓴᓴᓂᓪ ᓴᓴᓂᓪ: 2020-2023

ᓄᓇᓂᓪ ᓴᓴᓂᓪ ᓴᓴᓂᓪ ᓴᓴᓂᓪ
ᓴᓴᓂᓪ ᓴᓴᓂᓪ 1200, ᓴᓴᓂᓪ ᓄᓇᓂᓪ, X0A 0H0
www.assembly.nu.ca

ገቢዎች

| | |
|--------------------------------|----|
| ጠቅላይ ፊት-ገቢዎች ሪፖርት ለግብርና ቢሮ | 2 |
| ጠቅላይ ገቢዎች | 3 |
| ፊት-ገቢዎች ሪፖርት | 3 |
| ገቢዎች | 4 |
| ገቢዎች (2019-20) | 6 |
| ገቢዎች (2020-21) | 6 |
| ገቢዎች (2021-22) | 7 |
| ገቢዎች (2022-23) | 7 |
| ፊት-ገቢዎች ሪፖርት ለግብርና ቢሮ ለግብርና ቢሮ | 8 |
| ገቢዎች | 8 |
| ገቢዎች (2019-20) | 8 |
| ገቢዎች (2020-21) | 9 |
| ገቢዎች (2021-22) | 9 |
| ገቢዎች (2022-23) | 9 |
| ፊት-ገቢዎች ሪፖርት ለግብርና ቢሮ ለግብርና ቢሮ | 9 |
| ገቢዎች | 10 |
| ገቢዎች (2019-20) | 11 |
| ገቢዎች (2020-21) | 11 |
| ገቢዎች (2021-22) | 11 |
| ገቢዎች (2022-23) | 11 |
| ገቢዎች: ግብርና ቢሮ ለግብርና ቢሮ | 12 |

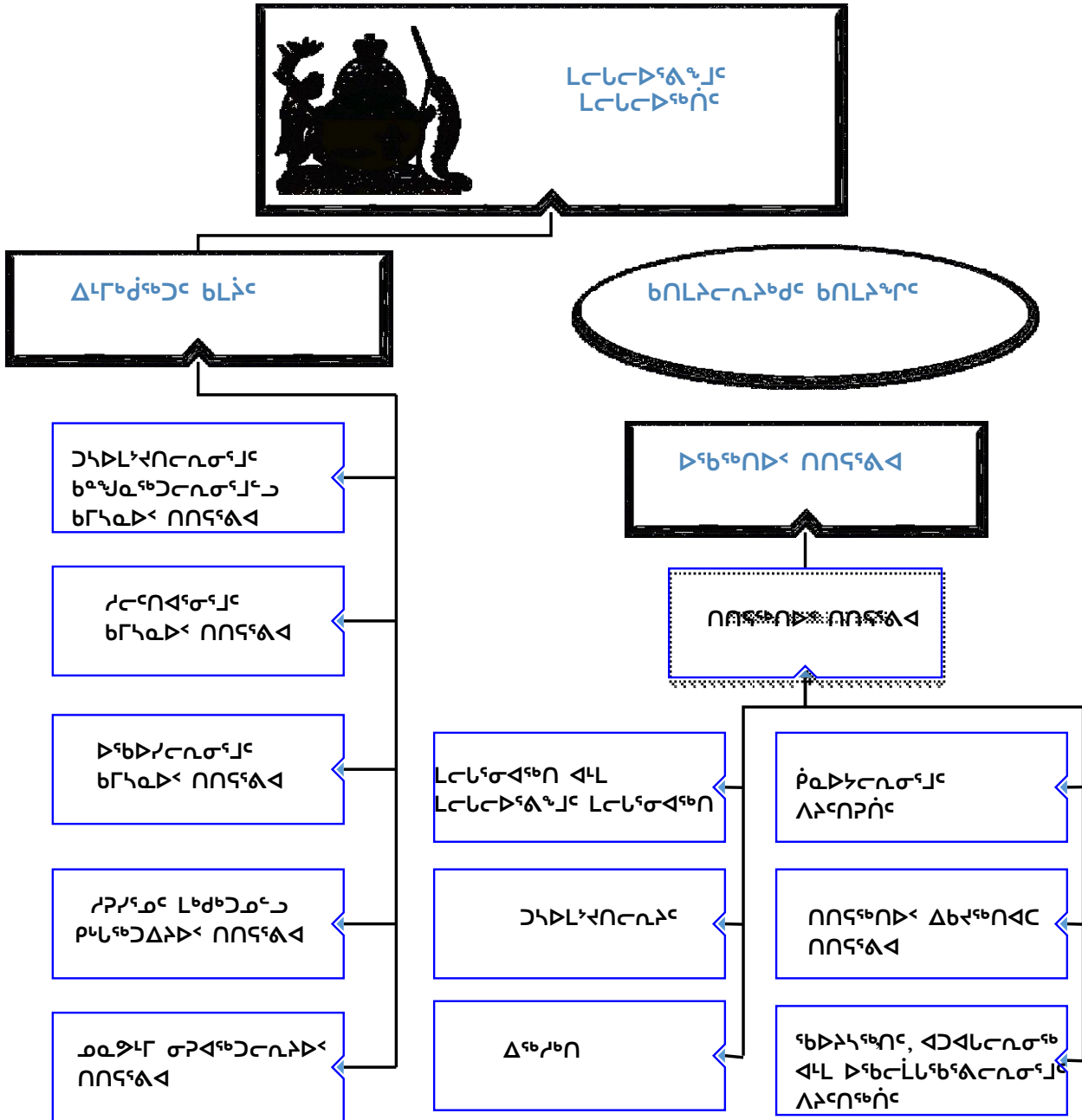
Իսկ ԼՆԵՐՆԵՐԵՐ ՆԻՇԵՐՆԵՐԸ ՆԱԾԻՐԵՆԵՐԸ

ԱՇԽԱՏԱԾՆԵՐԻ ՀԻՄՆԵՐԸ



ՈՈԳԾԿԵԼՏԵՑ 1

ժԵՁԻ ԼԵՆԵԾՏՃԱԿ ԳԻՅՐԵԴԻՍԵԴԼՏՄԵԼ



ጋራ

- ፊደራል ገቢዎች ሚኒስቴር ለገቢዎች ሚኒስቴር ለገቢዎች ሚኒስቴር;
- የፊደራል ገቢዎች ሚኒስቴር ለገቢዎች ሚኒስቴር ለገቢዎች ሚኒስቴር;
- ፊደራል ገቢዎች ሚኒስቴር ለገቢዎች ሚኒስቴር ለገቢዎች ሚኒስቴር.

| ገቢዎች | የገቢዎች ሚኒስቴር (\$000) | 2019-20 | 2020-21 | 2021-22 | 2022-23 |
|------|---------------------|---------|---------|---------|---------|
|------|---------------------|---------|---------|---------|---------|

የፊደራል ገቢዎች ሚኒስቴር

| | | | | |
|------------------|-----|-----|-----|-----|
| የፊደራል ገቢዎች ሚኒስቴር | 125 | 125 | 125 | 125 |
|------------------|-----|-----|-----|-----|

- የፊደራል ገቢዎች ሚኒስቴር ለገቢዎች ሚኒስቴር ለገቢዎች ሚኒስቴር;
- የፊደራል ገቢዎች ሚኒስቴር ለገቢዎች ሚኒስቴር ለገቢዎች ሚኒስቴር;
- የፊደራል ገቢዎች ሚኒስቴር ለገቢዎች ሚኒስቴር ለገቢዎች ሚኒስቴር;
- የፊደራል ገቢዎች ሚኒስቴር ለገቢዎች ሚኒስቴር ለገቢዎች ሚኒስቴር.

የፊደራል ገቢዎች ሚኒስቴር

| | | | | |
|------------------|-------|-------|-------|-------|
| የፊደራል ገቢዎች ሚኒስቴር | 1,410 | 1,410 | 1,410 | 1,410 |
|------------------|-------|-------|-------|-------|

- የፊደራል ገቢዎች ሚኒስቴር ለገቢዎች ሚኒስቴር ለገቢዎች ሚኒስቴር;
- የፊደራል ገቢዎች ሚኒስቴር ለገቢዎች ሚኒስቴር ለገቢዎች ሚኒስቴር.

የፊደራል ገቢዎች ሚኒስቴር

| | | | | |
|------------------|-----|-----|-----|-----|
| የፊደራል ገቢዎች ሚኒስቴር | 125 | 125 | 125 | 125 |
|------------------|-----|-----|-----|-----|

- የፊደራል ገቢዎች ሚኒስቴር ለገቢዎች ሚኒስቴር ለገቢዎች ሚኒስቴር;
- የፊደራል ገቢዎች ሚኒስቴር ለገቢዎች ሚኒስቴር ለገቢዎች ሚኒስቴር;
- የፊደራል ገቢዎች ሚኒስቴር ለገቢዎች ሚኒስቴር ለገቢዎች ሚኒስቴር;
- የፊደራል ገቢዎች ሚኒስቴር ለገቢዎች ሚኒስቴር ለገቢዎች ሚኒስቴር.



ᐱᐱᐱᐱᐱᐱᐱᐱ ᐱᐱᐱᐱᐱᐱᐱᐱᐱᐱᐱᐱᐱᐱ

| Branch | 2019 – 2020 Main Estimates | | 2020 – 2021 Main Estimates | | 2021 – 2022 Planned | | 2022 – 2023 Planned | |
|--|-------------------------------|-----------|-------------------------------|-----------|------------------------|-----------|------------------------|-----------|
| | \$0 | PYs | \$0 | PYs | \$0 | PYs | \$0 | PYs |
| ASSEMBLY OPERATIONS | | | | | | | | |
| Salary | 3,909 | 25 | 3,994 | 25 | 3,994 | 25 | 3,994 | 25 |
| Grants & Contributions | — | | — | | — | | — | |
| Other O&M | 5,797 | | 5,621 | | 5,621 | | 5,621 | |
| Subtotal | 9,706 | | 9,615 | | 9,615 | | 9,615 | |
| EXPENDITURES ON BEHALF OF MEMBERS | | | | | | | | |
| Salary | 6,280 | | 6,897 | | 6,897 | | 6,897 | |
| Grants & Contributions | — | | — | | — | | — | |
| Other O&M | 6,036 | | 5,480 | | 5,480 | | 5,480 | |
| Subtotal | 12,316 | | 12,377 | | 12,377 | | 12,377 | |
| INDEPENDENT OFFICERS | | | | | | | | |
| Salary | 3,050 | 18 | 3,073 | 18 | 3,073 | 18 | 3,073 | 18 |
| Grants & Contributions | 0 | | 0 | | 0 | | 0 | |
| Other O&M | 2,023 | | 2,205 | | 3,705 | | 2,205 | |
| Subtotal | 5,073 | | 5,278 | | 6,778 | | 5,278 | |
| TOTAL | 27,095 | 43 | 27,270 | 43 | 28,770 | 43 | 27,270 | 43 |

| Department Summary | 2019 – 2020 | | 2020 – 2021 | | 2021 – 2022 | | 2022 – 2023 | |
|--------------------|---------------|------|---------------|------|---------------|------|---------------|------|
| | \$000 | PYs | \$000 | PYs | \$000 | PYs | \$000 | PYs |
| Salary | 13,239 | 43.0 | 13,964 | 43.0 | 13,964 | 43.0 | 13,964 | 43.0 |
| G&C | - | | - | | - | | - | |
| Other O&M | 13,856 | | 13,306 | | 14,806 | | 13,306 | |
| total | 27,095 | | 27,270 | | 28,770 | | 27,270 | |

