

# Novaya Zemlya

262-5(2) Mar 3/20

**Novaya Zemlya** (/ˌnoʊvəjə ˈzɛmliə/, also UK: /ˌnɒv-ɑɪ.ə -/, US: /ˌzɛmˈl(j)ɑː/; <sup>[1]</sup><sup>[2]</sup> Russian: Но́вая Земля́, IPA: [ˈnɔvəjə zʲɪmˈlʲa], lit. "New Land"), also known as **Nova Zembla** (especially in Dutch), is an archipelago in the Arctic Ocean in northern Russia and the extreme northeast of Europe, the easternmost point of Europe lying at Cape Flissingsky on the Northern island. West of Novaya Zemlya is the Barents Sea, and to the east is the Kara Sea.

Novaya Zemlya is composed of two main islands, the northern Severny Island and the southern Yuzhny Island, which are separated by the Matochkin Strait. Administratively, it is incorporated as Novaya Zemlya District, one of the twenty-one in Arkhangelsk Oblast, Russia.<sup>[3]</sup> Municipally, it is incorporated as Novaya Zemlya Urban Okrug.<sup>[4]</sup>

The population of Novaya Zemlya, as of the 2010 Census, was about 2,429, of which 1,972 resided in Belushya Guba,<sup>[5]</sup> an urban settlement that is the administrative center of Novaya Zemlya District. The indigenous population (from 1872<sup>[6]</sup><sup>[7]</sup> to the 1950s when it was resettled to the mainland) consisted of about 50–300 Nenetses<sup>[8]</sup> who subsisted mainly on fishing, trapping, reindeer herding, polar bear hunting and seal hunting.<sup>[9]</sup><sup>[10]</sup> Natural resources include copper, lead, and zinc.<sup>[9]</sup>

Novaya Zemlya was a sensitive military area during the Cold War years, and parts of it are still used for airfields today. The Soviet Air Force maintained a presence at Rogachevo on the southern part of the southern island, on the westernmost peninsula (71.61787°N 52.47884°E). It was used primarily for interceptor aircraft operations, but also provided logistical support for the nearby nuclear test area. Novaya Zemlya was the site of one of the two major nuclear test sites managed by the USSR, used for air drops and underground testing of the largest of Soviet nuclear bombs, in particular the October 30, 1961, air burst explosion of Tsar Bomba, the largest, most powerful nuclear weapon ever detonated.

## Contents

### History

- World War II
  - Convoy PQ 17
  - The Breakout
  - Operation Wunderland
- Nuclear testing

### Geography

### Environment

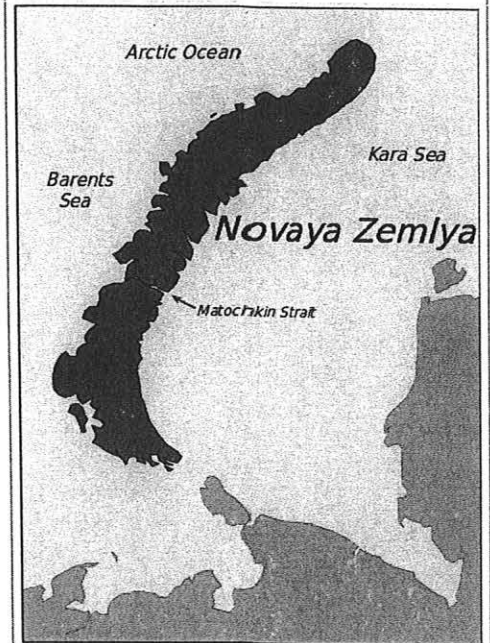
- Climate

### See also

### References

## Novaya Zemlya

Но́вая Земля́



Map of Novaya Zemlya



Location of Novaya Zemlya, including the site of the Tsar Bomba detonation

### Geography

Location	Arctic Ocean
Coordinates	74°N 56°E
Major islands	2
Area	90,650 km <sup>2</sup> (35,000 sq mi)
Highest elevation	1,547 m (5,075 ft)

### Administration

#### Russia

Federal subject	Arkhangelsk Oblast
Largest settlement	Belushya Guba (pop. 1,972)

### Demographics